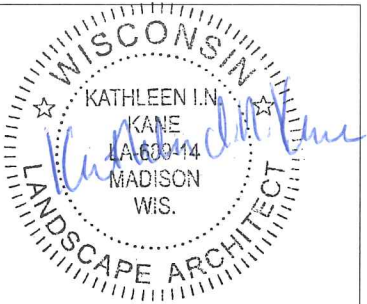


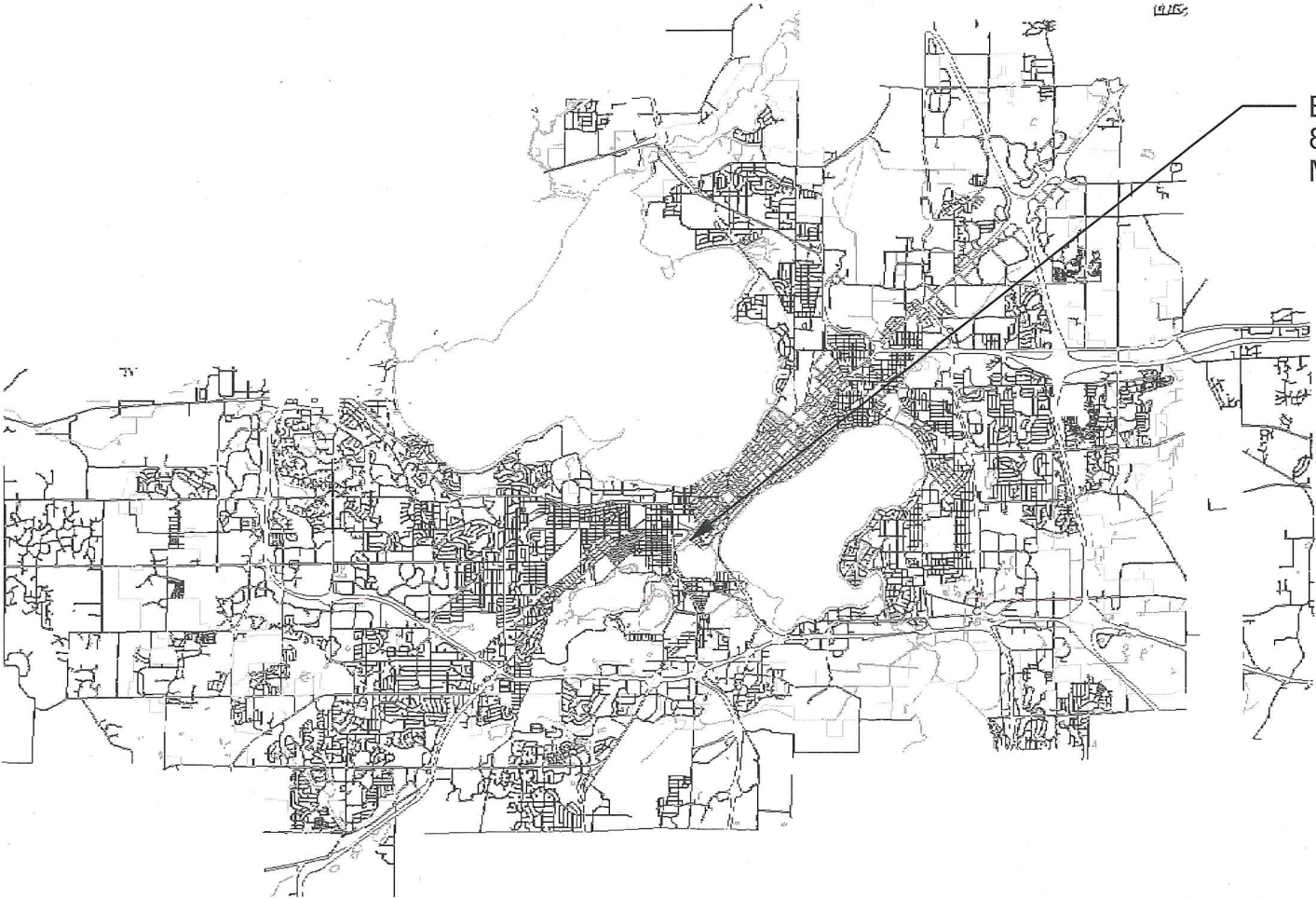
- SHEET SCHEDULE
- 1.1 PROJECT LOCATION AND SITE ACCESS
 - 1.2 DEMOLITION AND PROTECTION PLAN
 - 1.3 SITE PLAN
 - 1.4 SITE LAYOUT PLAN
 - 1.5 GRADING AND EROSION CONTROL PLAN
 - 1.6 DESIGN COMPUTATIONS
 - 1.7 DETAILS



City of Madison
Department of Public Works
PARKS DIVISION
City-County Building, Suite 104
210 Martin Luther King, Jr. Blvd.
PO Box 2987
Madison, WI 53701-2987
play
MADISON
PARKS



2017 BRITTINGHAM PARK ACCESSIBLE PLAYGROUND
CONTRACT 7927
MUNIS NO. 17440-51-130



BRITTINGHAM PARK
829 W WASHINGTON AVE
MADISON, WI 53715

PROJECT:
*2017
Brittingham Park
Accessible
Playground*

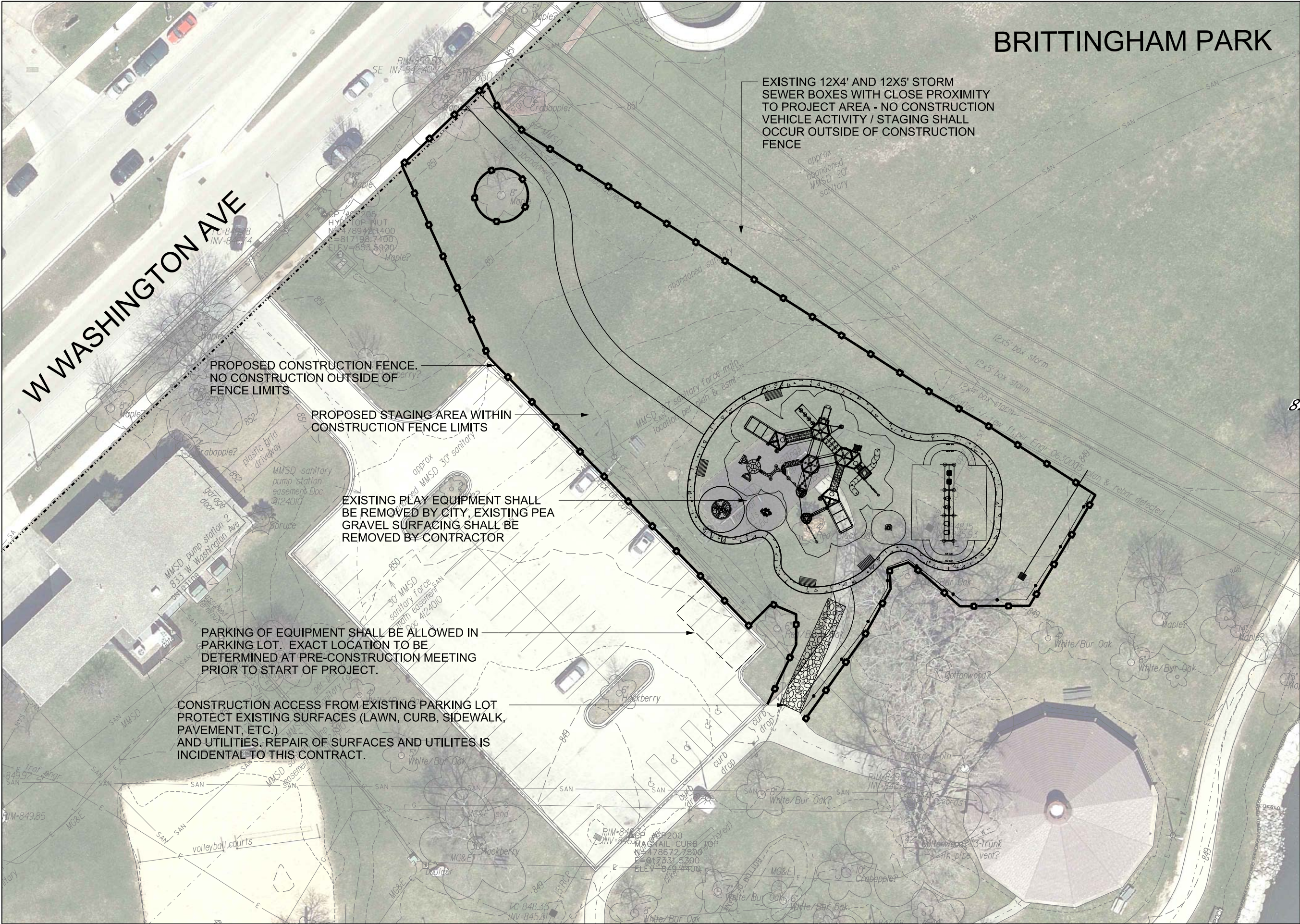
Although every effort has been made in preparing these plans and checking them for accuracy, the contractor and subcontractors must check all details and dimensions of their trade and be responsible for the same.

ITEM	DATE
Drawn by: KK	03-17-2017

PUBLIC WORKS PROJECT #:
7927

SHEET TITLE:

SHEET NUMBER:

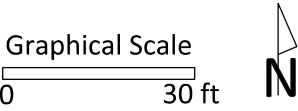


BRITTINGHAM PARK

City of Madison
Department of Public Works
PARKS DIVISION

City-County Building, Suite 104
210 Martin Luther King, Jr. Blvd.
Madison, WI 53703

play
**MADISON
PARKS**



PROJECT: **2017
BRITTINGHAM
PARK
ACCESSIBLE
PLAYGROUND**

**BRITTINGHAM PARK
829 W WASHINGTON AVE
MADISON, WI 53715**

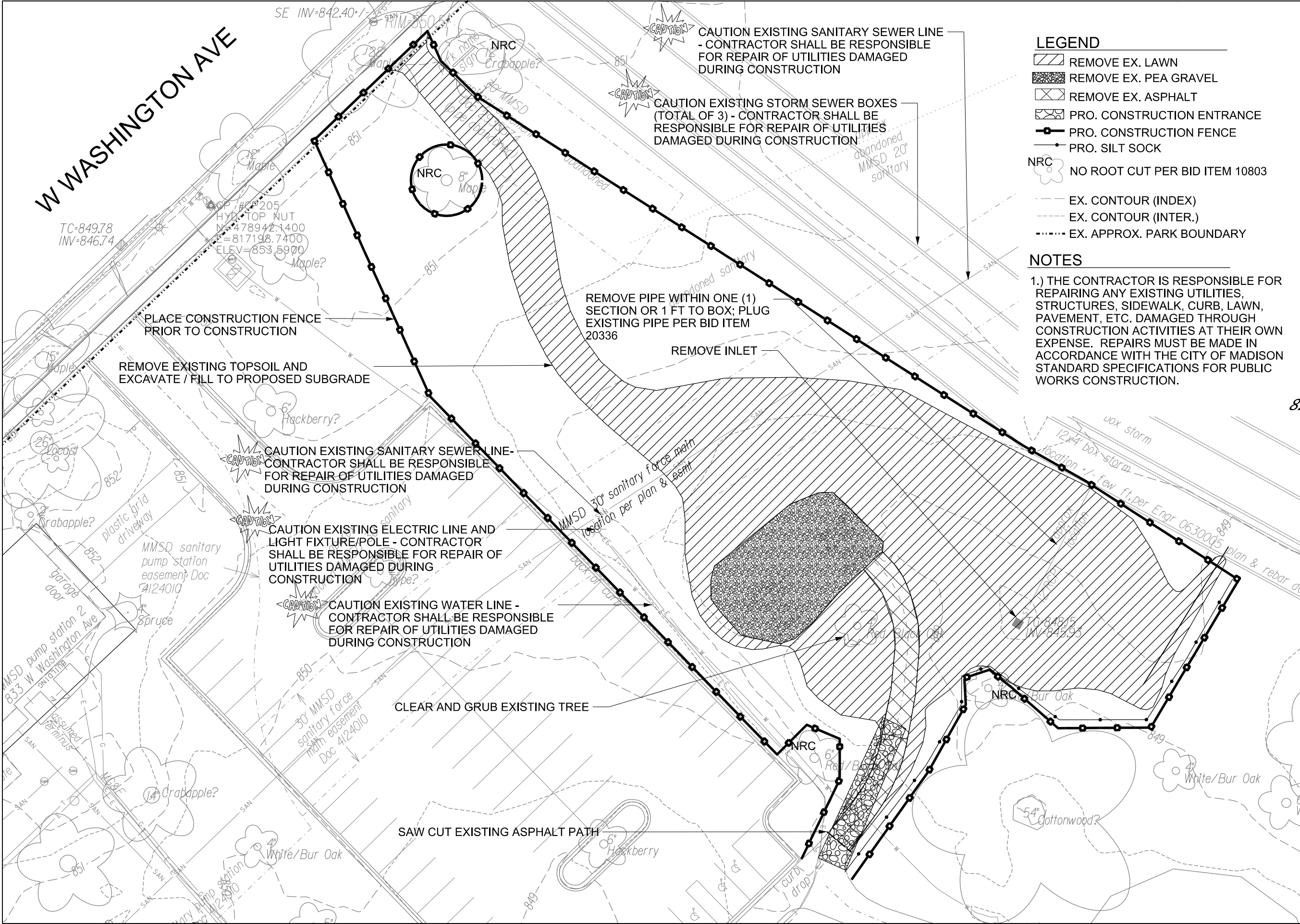
Although every effort has been made in preparing these plans and checking them for accuracy, the contractor and subcontractors must check all details and dimensions of their trade and be responsible for the same.

ITEM	DATE
Drawn by: KK	03-17-2017
Approved by:	xx-xx-xxxx

PUBLIC WORKS PROJECT #:
7927

SHEET TITLE:
**PROJECT LOCATION
AND SITE ACCESS**

SHEET NUMBER:
1.1



LEGEND

- REMOVE EX. LAWN
- REMOVE EX. PEA GRAVEL
- REMOVE EX. ASPHALT
- PRO. CONSTRUCTION ENTRANCE
- PRO. CONSTRUCTION FENCE
- PRO. SILT SOCK
- NRC NO ROOT CUT PER BID ITEM 10803

- EX. CONTOUR (INDEX)
- EX. CONTOUR (INTER.)
- EX. APPROX. PARK BOUNDARY

NOTES

1.) THE CONTRACTOR IS RESPONSIBLE FOR REPAIRING ANY EXISTING UTILITIES, STRUCTURES, SIDEWALK, CURB, LAWN, PAVEMENT, ETC. DAMAGED THROUGH CONSTRUCTION ACTIVITIES AT THEIR OWN EXPENSE. REPAIRS MUST BE MADE IN ACCORDANCE WITH THE CITY OF MADISON STANDARD SPECIFICATIONS FOR PUBLIC WORKS CONSTRUCTION.

City of Madison
Department of Public Works
PARKS DIVISION

City-County Building, Suite 104
210 Martin Luther King, Jr. Blvd.
Madison, WI 53703

play
MADISON
PARKS

Graphical Scale
0 30 ft N

PROJECT: 2017
BRITTINGHAM
PARK
ACCESSIBLE
PLAYGROUND

BRITTINGHAM PARK
829 W WASHINGTON AVE
MADISON, WI 53715

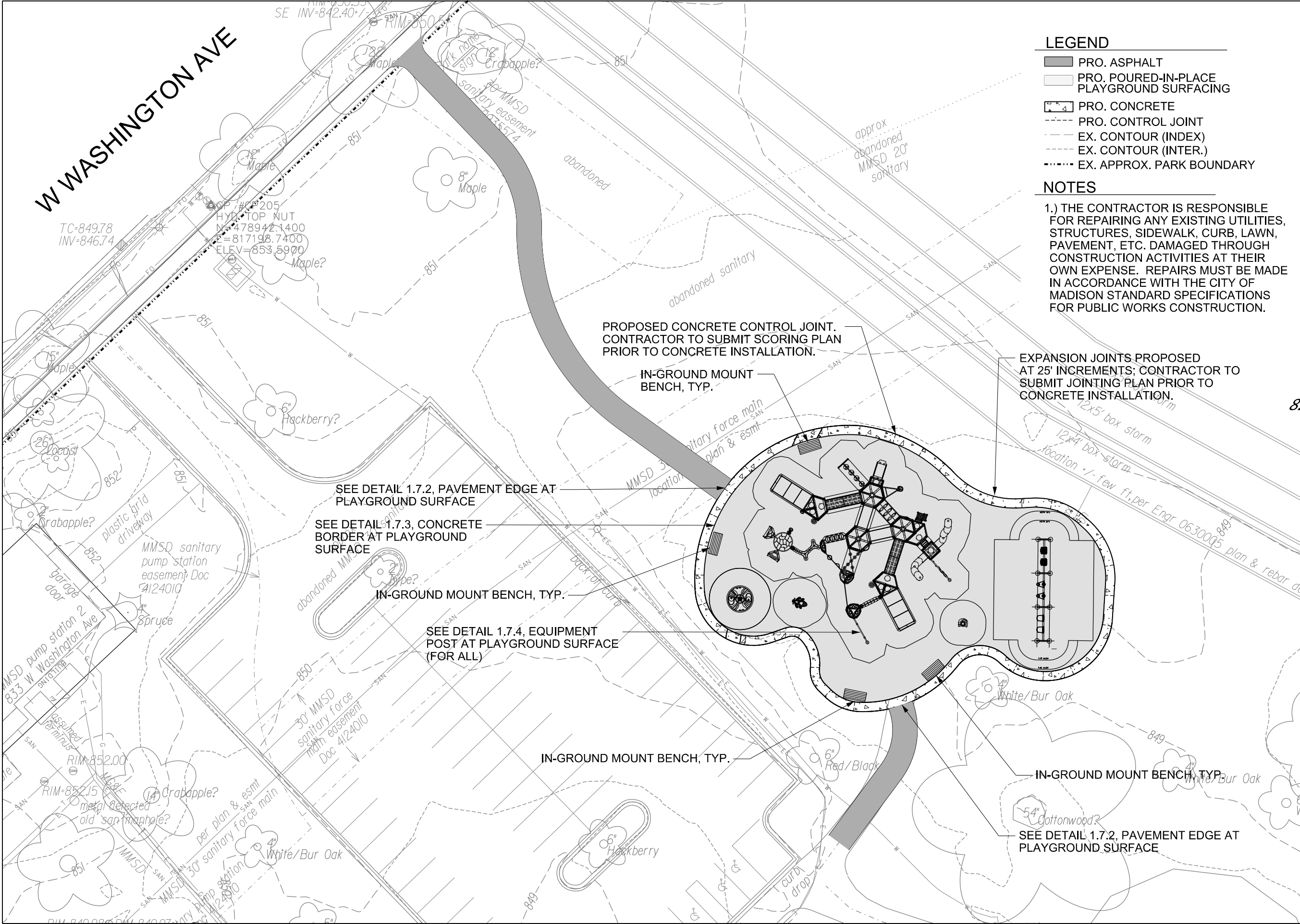
Although every effort has been made in preparing these plans and checking them for accuracy, the contractor and subcontractors must check all details and dimensions of their trade and be responsible for the same.

ITEM DATE
Drawn by: KK 03-17-2017
Approved by: XXX-XX-XXXX

PUBLIC WORKS PROJECT #:
7927

SHEET TITLE:
DEMOLITION AND
PROTECTION PLAN

SHEET NUMBER:
1.2



LEGEND

- PRO. ASPHALT
- PRO. POURED-IN-PLACE PLAYGROUND SURFACING
- PRO. CONCRETE
- PRO. CONTROL JOINT
- EX. CONTOUR (INDEX)
- EX. CONTOUR (INTER.)
- EX. APPROX. PARK BOUNDARY

NOTES

1.) THE CONTRACTOR IS RESPONSIBLE FOR REPAIRING ANY EXISTING UTILITIES, STRUCTURES, SIDEWALK, CURB, LAWN, PAVEMENT, ETC. DAMAGED THROUGH CONSTRUCTION ACTIVITIES AT THEIR OWN EXPENSE. REPAIRS MUST BE MADE IN ACCORDANCE WITH THE CITY OF MADISON STANDARD SPECIFICATIONS FOR PUBLIC WORKS CONSTRUCTION.

City of Madison
Department of Public Works
PARKS DIVISION

City-County Building, Suite 104
210 Martin Luther King, Jr. Blvd.
Madison, WI 53703

play
**MADISON
PARKS**

Graphical Scale
0 30 ft
N

PROJECT: **2017
BRITTINGHAM
PARK
ACCESSIBLE
PLAYGROUND**

**BRITTINGHAM PARK
829 W WASHINGTON AVE
MADISON, WI 53715**

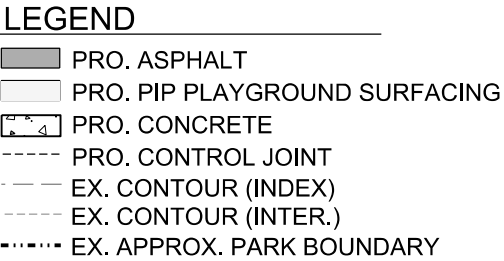
Although every effort has been made in preparing these plans and checking them for accuracy, the contractor and subcontractors must check all details and dimensions of their trade and be responsible for the same.

ITEM	DATE
Drawn by:	XX-XX-XXXX
Approved by:	XX-XX-XXXX

PUBLIC WORKS PROJECT #:
7927

SHEET TITLE:
SITE PLAN

SHEET NUMBER:
1.3



1.) THE CONTRACTOR IS RESPONSIBLE FOR REPAIRING ANY EXISTING UTILITIES, STRUCTURES, SIDEWALK, CURB, LAWN, PAVEMENT, ETC. DAMAGED THROUGH CONSTRUCTION ACTIVITIES AT THEIR OWN EXPENSE. REPAIRS MUST BE MADE IN ACCORDANCE WITH THE CITY OF MADISON STANDARD SPECIFICATIONS FOR PUBLIC WORKS CONSTRUCTION.

play
**MADISON
PARKS**

*BRITTINGHAM PARK
829 W WASHINGTON AVE
MADISON, WI 53715*

Although every effort has been made in preparing these plans and checking them for accuracy, the contractor and subcontractors must check all details and dimensions of their trade and be responsible for the same.

ITEM	DATE
<i>Drawn by: KK</i>	<i>03-17-2017</i>
<i>Approved by:</i>	<i>XX-XX-XXXX</i>

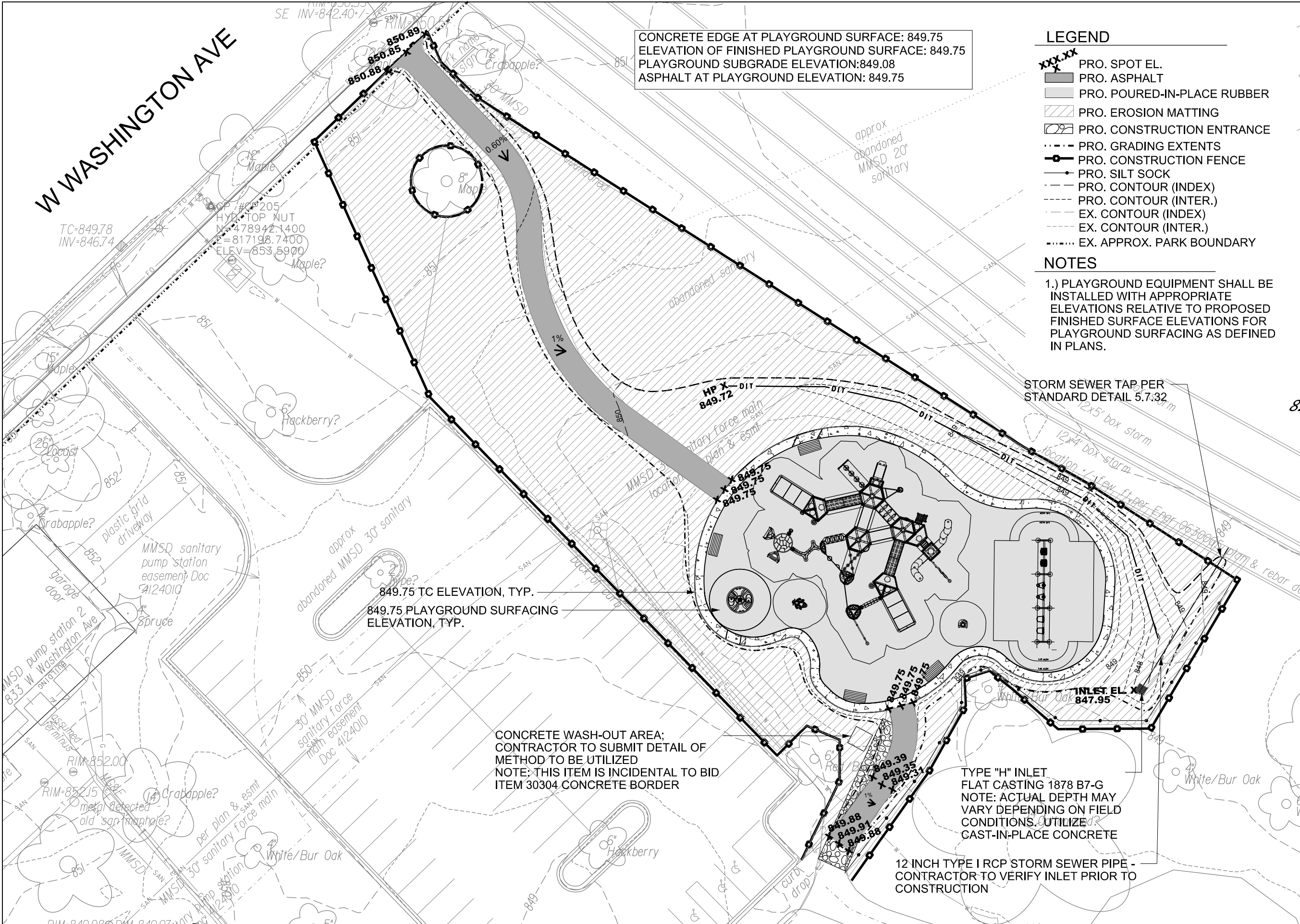
PUBLIC WORKS PROJECT #:
7927

SHEET TITLE:

SITE LAYOUT PLAN

SHEET NUMBER

1.4



LEGEND

- PRO. SPOT EL.
- PRO. ASPHALT
- PRO. POURED-IN-PLACE RUBBER
- PRO. EROSION MATTING
- PRO. CONSTRUCTION ENTRANCE
- PRO. GRADING EXTENTS
- PRO. CONSTRUCTION FENCE
- PRO. SILT SOCK
- PRO. CONTOUR (INDEX)
- PRO. CONTOUR (INTER.)
- EX. CONTOUR (INDEX)
- EX. CONTOUR (INTER.)
- EX. APPROX. PARK BOUNDARY

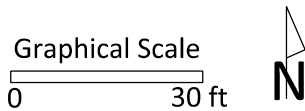
NOTES

1.) PLAYGROUND EQUIPMENT SHALL BE INSTALLED WITH APPROPRIATE ELEVATIONS RELATIVE TO PROPOSED FINISHED SURFACE ELEVATIONS FOR PLAYGROUND SURFACING AS DEFINED IN PLANS.

City of Madison
Department of Public Works
PARKS DIVISION

City-County Building, Suite 104
210 Martin Luther King, Jr. Blvd.
Madison, WI 53703

play
MADISON
PARKS



PROJECT: 2017
BRITTINGHAM
PARK
ACCESSIBLE
PLAYGROUND

BRITTINGHAM PARK
829 W WASHINGTON AVE
MADISON, WI 53715

Although every effort has been made in preparing these plans and checking them for accuracy, the contractor and subcontractors must check all details and dimensions of their trade and be responsible for the same.

ITEM	DATE
Drawn by: KK	03-17-2017
Approved by:	XX-XX-XXXX

PUBLIC WORKS PROJECT #:
7927

SHEET TITLE:
GRADING AND
EROSION CONTROL
PLAN

SHEET NUMBER:

1.5

				From Surface Model	To Surface Model	area (sq ft)	depth (ft)	Unfactored volume (cu ft)	Unfactored volume (cu yd)	Expansion Factor (%)	Factored (Uncom- pacted) Volume (cu yd)
Sort	Grp	Material	Item								
1.1	Asphalt to Asphalt	Asphalt Excavate	Remove estimated 3in asphalt	n/a	n/a	396	0.25	99	3.7	0%	3.7
1.2	Asphalt to Asphalt	Gravel (Clean) Excavate	Remove estimated 4in clean gravel base	n/a	n/a	396	0.33	132	4.9	0%	4.9
1.3	Asphalt to Asphalt	Gravel (Dirty) Excavate	Remove estimated 2in mixed gravel/subsoil	n/a	n/a	396	0.17	66	2.4	0%	2.4
1.4	Asphalt to Asphalt	Subsoil Excavate	Cut subsoil to proposed subgrade	Ex-9in	Pro-12in	396	varies	123	4.6	0%	4.6
1.5	Asphalt to Asphalt	Subsoil Place	Fill subsoil to proposed subgrade	Ex-9in	Pro-12in	396	varies	-7	-0.3	0%	-0.3
1.6	Asphalt to Asphalt	Gravel (or Pavement) Place	Place 9in gravel base out to 6in from pavement edge	n/a	n/a	396	-0.75	-297	-11.0	0%	-11.0
1.7	Asphalt to Asphalt	Asphalt Place	Place 3in asphalt	n/a	n/a	346	-0.25	-86	-3.2	0%	-3.2
1.8	Asphalt to Asphalt	Topsoil Place	Place 3in topsoil over 6in wide gravel edge	n/a	n/a	60	-0.25	-15	-0.6	0%	-0.6
2.1	Asphalt to Concrete	Asphalt Excavate	Remove estimated 3in asphalt	n/a	n/a	42	0.25	11	0.4	0%	0.4
2.2	Asphalt to Concrete	Gravel (Clean) Excavate	Remove estimated 4in clean gravel base	n/a	n/a	42	0.33	14	0.5	0%	0.5
2.3	Asphalt to Concrete	Subsoil Excavate	Cut subsoil to proposed subgrade	Ex-9in	Pro-11in	42	varies	0	0.0	0%	0.0
2.4	Asphalt to Concrete	Subsoil Place	Fill subsoil to proposed subgrade	Ex-9in	Pro-11in	42	varies	-17	-0.6	0%	-0.6
2.5	Asphalt to Concrete	Gravel (or Pavement) Place	Place 6in gravel base out to 6in from pavement edge	n/a	n/a	42	-0.50	-21	-0.8	0%	-0.8
2.6	Asphalt to Concrete	Concrete Place	Place 5in concrete	n/a	n/a	28	-0.42	-12	-0.4	0%	-0.4
2.7	Asphalt to Concrete	Topsoil Place	Place 5in topsoil over 6in wide gravel edge	n/a	n/a	14	-0.42	-6	-0.2	0%	-0.2
3.1	Asphalt to Grass	Asphalt Excavate	Remove estimated 3in asphalt	n/a	n/a	66	0.25	17	0.6	0%	0.6
3.2	Asphalt to Grass	Gravel (Clean) Excavate	Remove estimated 4in clean gravel base	n/a	n/a	66	0.33	22	0.8	0%	0.8
3.3	Asphalt to Grass	Gravel (Dirty) Excavate	Remove estimated 2in mixed gravel/subsoil	n/a	n/a	66	0.17	11	0.4	0%	0.4
3.4	Asphalt to Grass	Subsoil Excavate	Cut subsoil to proposed subgrade	Ex-9in	Pro-6in	66	varies	0	0.0	0%	0.0
3.5	Asphalt to Grass	Subsoil Place	Fill subsoil to proposed subgrade	Ex-9in	Pro-6in	66	varies	-20	-0.7	0%	-0.7
3.6	Asphalt to Grass	Topsoil Place	Place 6in topsoil	n/a	n/a	66	-0.50	-33	-1.2	0%	-1.2
4.1	Asphalt to Playsurface	Asphalt Excavate	Remove estimated 3in asphalt	n/a	n/a	382	0.25	96	3.5	0%	3.5
4.2	Asphalt to Playsurface	Gravel (Clean) Excavate	Remove estimated 4in clean gravel base	n/a	n/a	382	0.33	127	4.7	0%	4.7
4.3	Asphalt to Playsurface	Gravel (Dirty) Excavate	Remove estimated 2in mixed gravel/subsoil	n/a	n/a	382	0.17	64	2.4	0%	2.4
4.4	Asphalt to Playsurface	Subsoil Excavate	Cut subsoil to proposed subgrade	Ex-9in	Pro-8in	382	varies	0	0.0	0%	0.0
4.5	Asphalt to Playsurface	Subsoil Place	Fill subsoil to proposed subgrade	Ex-9in	Pro-8in	382	varies	-262	-10.4	0%	-10.4
4.6	Asphalt to Playsurface	Gravel (or Play Surface) Place	Place 4in gravel base	n/a	n/a	382	-0.33	-126	-4.7	0%	-4.7
4.7	Asphalt to Playsurface	Playsurface Place	Place 4in PIP playsurface	n/a	n/a	382	-0.33	-127	-4.7	0%	-4.7
5.1	Grass to Asphalt	Topsoil Excavate	Strip 6in topsoil	n/a	n/a	1769	0.50	884	32.8	0%	32.8
5.2	Grass to Asphalt	Subsoil Excavate	Cut subsoil to proposed subgrade	Ex-6in	Pro-12in	1769	varies	2937	108.8	0%	108.8
5.3	Grass to Asphalt	Subsoil Place	Fill subsoil to proposed subgrade	Ex-6in	Pro-12in	1769	varies	0	0.0	0%	0.0
5.4	Grass to Asphalt	Gravel (Path) Place	Place 9in gravel base, out to 6in from asphalt edge	n/a	n/a	1769	-0.75	-1326	-49.1	0%	-49.1
5.5	Grass to Asphalt	Asphalt Place	Place 3in asphalt	n/a	n/a	1537	-0.25	-384	-14.2	0%	-14.2
5.6	Grass to Asphalt	Topsoil Place	Place 3in topsoil on 6in wide gravel edge	n/a	n/a	232	-0.25	-58	-2.1	0%	-2.1
6.1	Grass to Concrete	Topsoil Excavate	Strip 6in topsoil	n/a	n/a	1394	0.50	696.85	25.8	0%	25.8
6.2	Grass to Concrete	Subsoil Excavate	Cut subsoil to proposed subgrade	Ex-6in	Pro-11in	1394	varies	41.42	1.5	0%	1.5
6.3	Grass to Concrete	Subsoil Place	Fill subsoil to proposed subgrade	Ex-6in	Pro-11in	1394	varies	-165.21	-6.1	0%	-6.1
6.4	Grass to Concrete	Gravel (for concrete edge) Place	Place 6in gravel base out to 6in from pavement edge	n/a	n/a	1394	-0.50	-696.85	-25.8	0%	-25.8
6.5	Grass to Concrete	Concrete Place	Place 5in concrete	n/a	n/a	1018	-0.42	-424.40	-15.7	0%	-15.7
6.6	Grass to Concrete	Topsoil Place	Place 6in topsoil over 6in wide gravel edge	n/a	n/a	376	-0.50	-188.00	-7.0	0%	-7.0
7.1	Grass to Grass	Topsoil Excavate	Strip 6in topsoil	n/a	n/a	5123	0.50	2561.72	94.9	0%	94.9
7.2	Grass to Grass	Subsoil Excavate	Cut subsoil to proposed subgrade	Ex-6in	Pro-6in	5123	varies	1168.42	43.3	0%	43.3
7.3	Grass to Grass	Subsoil Place	Fill subsoil to proposed subgrade	Ex-6in	Pro-6in	5123	varies	-461.42	-17.1	0%	-17.1
7.4	Grass to Grass	Topsoil Place	Place 6in topsoil	n/a	n/a	5123	-0.50	-2561.72	-94.9	0%	-94.9
8.1	Grass to Play Surface	Topsoil Excavate	Strip 6in topsoil	n/a	n/a	5522	0.50	2761	102.3	0%	102.3
8.2	Grass to Play Surface	Subsoil Excavate	Cut subsoil to proposed subgrade	Ex-6in	Pro-8in	5522	varies	0	0.0	0%	0.0
8.3	Grass to Play Surface	Subsoil Place	Fill subsoil to proposed subgrade	Ex-6in	Pro-8in	5522	varies	-3130	-115.9	0%	-115.9
8.4	Grass to Play Surface	Play Surface Place	Place 4in PIP play surface and 4" gravel	n/a	n/a	5522	-0.67	-3700	-137.0	0%	-137.0
9.1	Play Surface to Grass	Play Surface Excavate	Remove existing play surface, estimated depth 17in	n/a	n/a	8	1.42	10.68	0.4	0%	0.4
9.2	Play Surface to Grass	Subsoil Excavate	Cut subsoil to proposed subgrade	Ex-17in	Pro-6in	8	varies	0.00	0.0	0%	0.0
9.3	Play Surface to Grass	Subsoil Place	Fill subsoil to proposed subgrade	Ex-17in	Pro-6in	8	varies	-7.90	-0.3	0%	-0.3
9.4	Play Surface to Grass	Topsoil Place	Place 6in topsoil	n/a	n/a	8	-0.50	-3.77	-0.1	0%	-0.1
10.1	Play Surface to Play Surface	Play Surface Excavate	Remove existing play surface, estimated depth 17in	n/a	n/a	1618	1.42	2297.12	85.1	0%	85.1
10.2	Play Surface to Play Surface	Subsoil Excavate	Cut subsoil to proposed subgrade	Ex-17in	Pro-8in	1618	varies	0.00	0.0	0%	0.0
10.3	Play Surface to Play Surface	Subsoil Place	Fill subsoil to proposed subgrade	Ex-17in	Pro-8in	1618	varies	-1950.11	-72.2	0%	-72.2
10.4	Play Surface to Play Surface	Play Surface Place	Place 4in PIP play surface and 4" gravel	n/a	n/a	1618	-0.67	-1083.85	-40.1	0%	-40.1
11.1	Play Surface to Concrete	Play Surface Excavate	Remove existing play surface, estimated depth 17in	n/a	n/a	63	1.42	89.25	3.3	0%	3.3
11.2	Play Surface to Concrete	Subsoil Place	Cut subsoil to proposed subgrade	Ex-17in	Pro-11in	63	varies	0.00	0.0	0%	0.0
11.3	Play Surface to Concrete	Subsoil Excavate	Fill subsoil to proposed subgrade	Ex-17in	Pro-11in	63	varies	-47.65	-1.8	0%	-1.8
11.4	Play Surface to Concrete	Concrete Border Place (placeholder volume)	Place playground border timbers (placeholder volume to balance volume compans)	n/a	n/a	63	-1.00	-62.85	-2.3	0%	-2.3

Brittingham Park Playground - Earthwork Quantities City of Madison, WI Public Works Contract #7927 Date Revised: 3/10/2017	
Derived from more detailed spreadsheet available from Parks Div	
Computation Summary Positive volumes are cuts (material available), negative volumes are fills (material needed)	
Row Labels	Sum of Unfac-tored volume (cu yd)
Asphalt Place	-17.4
Gravel (for Pavement) Place	-11.8
Play Surface Excavate	88.8
Play Surface Place	-177.2
Subsoil Excavate	156.4
Subsoil Place	-223.7
Topsoil Excavate	255.7
Topsoil Place	-106.1
Concrete Place	-16.2
Gravel (for Playsurface) Place	-4.7
Gravel (Path) Place	-49.1
Gravel (for concrete edge) Place	-25.8
Grand Total	-131.1

Bid Item	Quantity	Units	Relation to Table Above
20101 Excavation Cut	412	CY	= Subsoil Excavate + Topsoil Excavate
20103 Excavation Cut - Pea Gravel	89	CY	= Play Surface Excavate
20201 Fill	67	CY	= Subsoil Excavate + Subsoil Place
20221 Topsoil	635	SY	= (Topsoil Place)/-.167
40102 Crushed Aggregate Base Course Gradation No. 2 & 3	183	tons	=(Gravel for Pavement Place + Gravel for Playsurface Place + Gravel for Concrete Edge Place) * -.2 ton/cubic yard
40201 3" Depth HMA Pavement Type E-0.3	37.7	tons	= Asphalt Place * -.16 ton/cubic yard

play
**MADISON
PARKS**

*BRITTINGHAM PARK
829 W WASHINGTON AVE
MADISON, WI 53715*

ITEM	DATE
<i>Drawn by: KK</i>	<i>03-17-2017</i>
<i>Approved by:</i>	<i>xx-xx-xxxx</i>

DESIGN COMPUTATIONS

1.6

PROJECT: **2017
BRITTINGHAM
PARK
ACCESSIBLE
PLAYGROUND**

Although every effort has been made in preparing these plans and checking them for accuracy, the contractor and subcontractors must check all details and dimensions of their trade and be responsible for the same.

ITEM	DATE
Drawn by: KK	03-17-2017

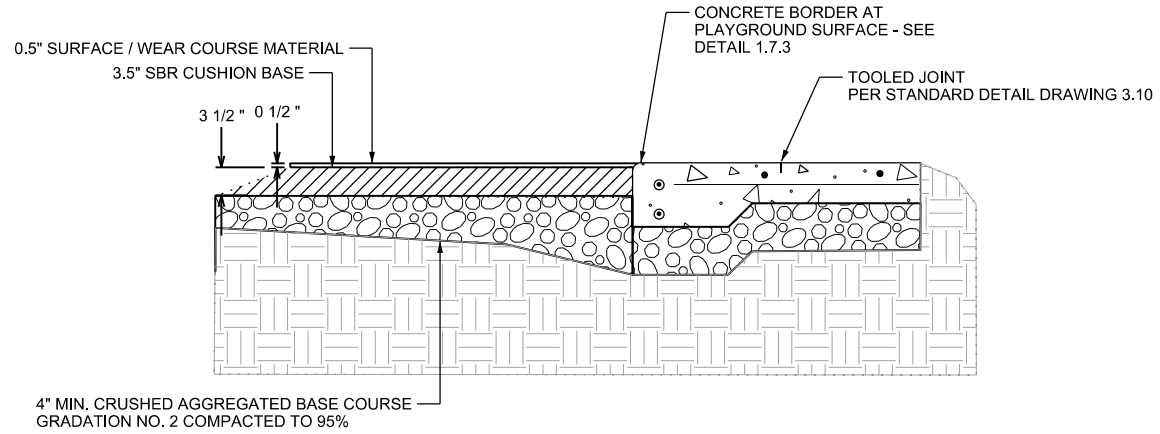
PUBLIC WORKS PROJECT #:
7927

SHEET TITLE:

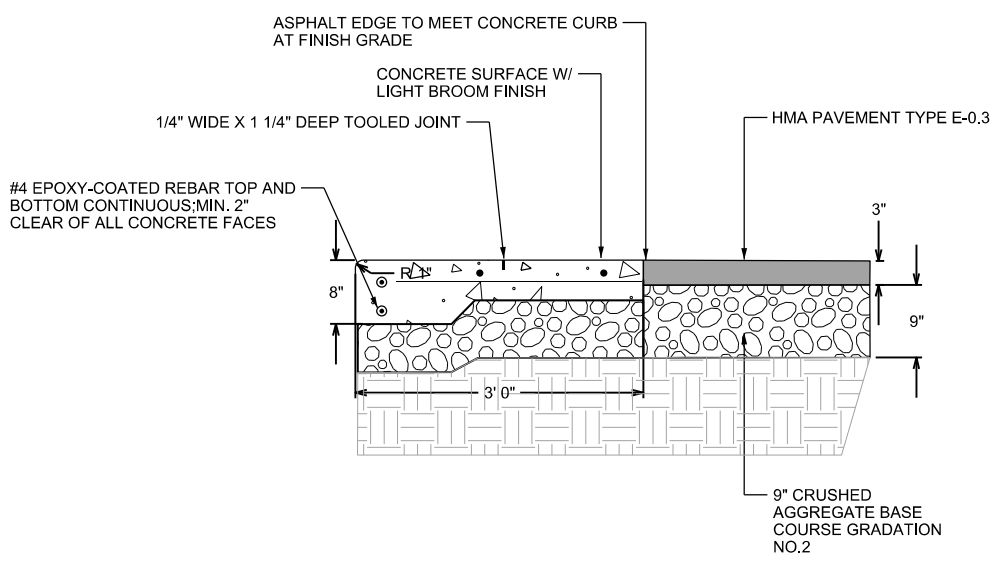
DETAILS

SHEET NUMBER:

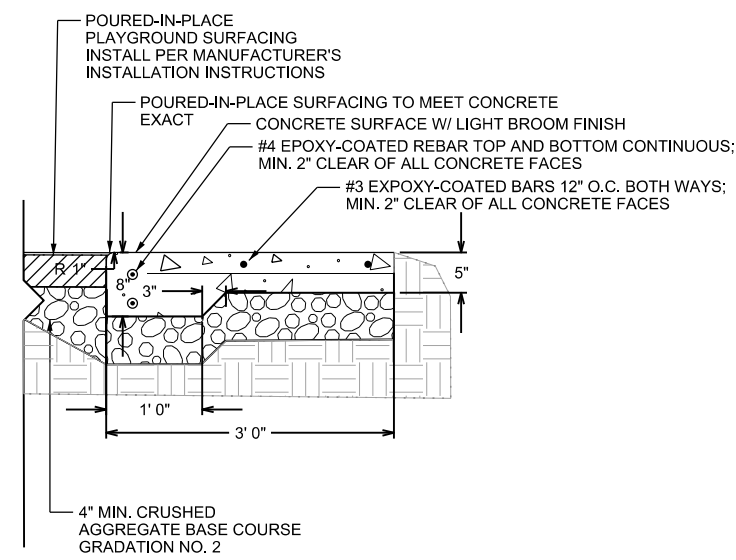
1.7



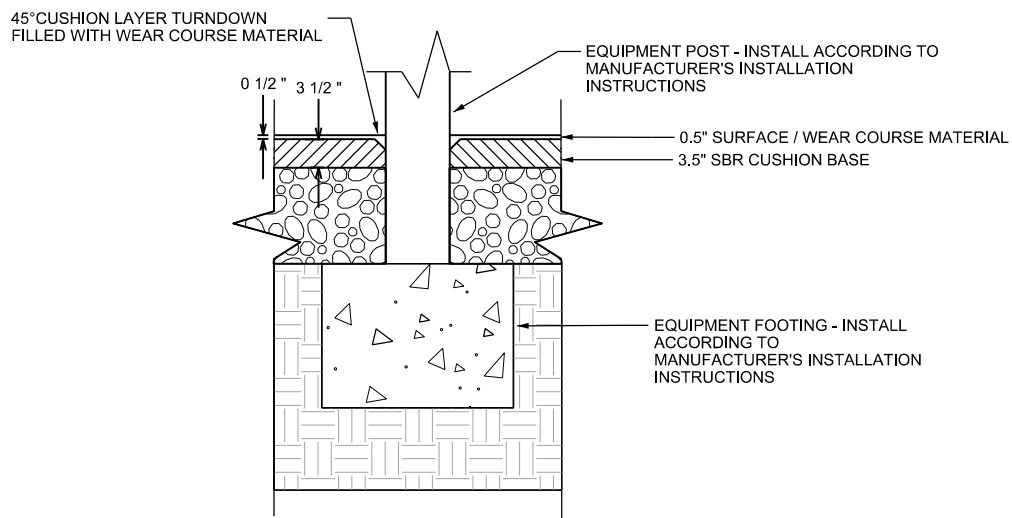
1.7.1 POURED IN PLACE PLAYGROUND SURFACING



1.7.2 PAVEMENT EDGE AT PLAYGROUND SURFACE



1.7.3 CONCRETE BORDER AT PLAYGROUND SURFACE



1.7.4 EQUIPMENT POST AT PLAYGROUND SURFACE